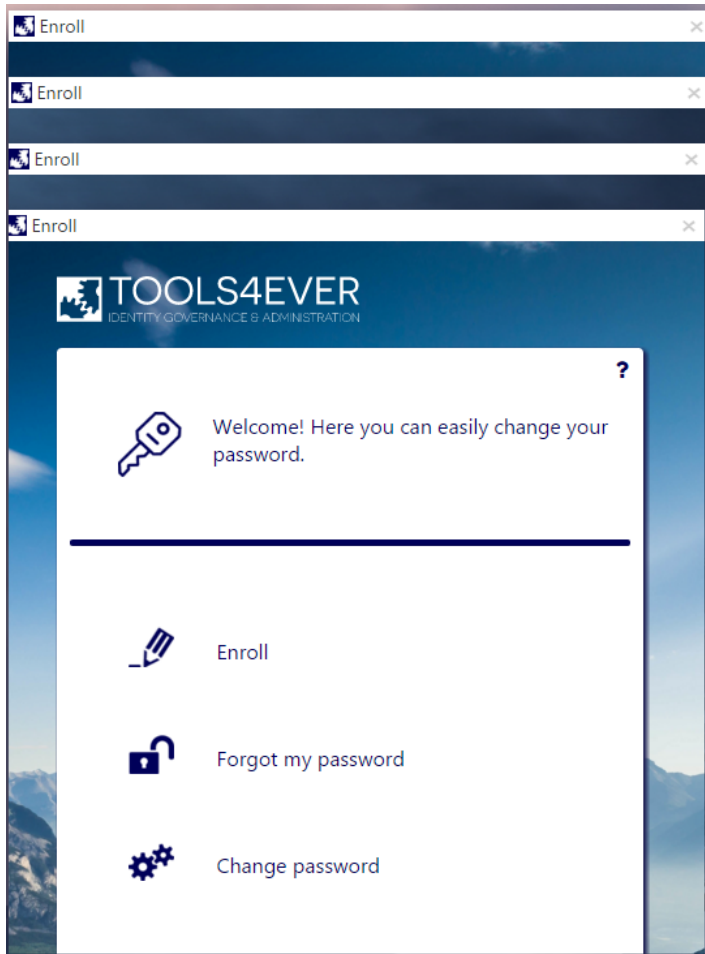




Knowledgebase > SSRPM > SSRPM - The Enrollment Wizard in the web interface opens inside of itself

SSRPM - The Enrollment Wizard in the web interface opens inside of itself

Steve Miller - 2015-12-30 - SSRPM

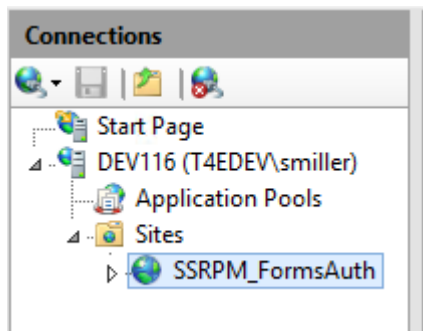


Summary

When you click on **Enroll** in the SSRPM Web Interface, the Enrollment Wizard will continuously open inside of itself. This is due to the configuration of the .NET Authorization Rules in the IIS website.

Solution

1. Log onto the IIS server that hosts the SSRPM Web Interface.
2. Expand *Sites* and select the SSRPM website.



3. Double click on **.NET Authorization Rules**.
4. You will likely see a rule that is denying all users. This is the cause of the issue with the Enrollment Wizard.

.NET Authorization Rules

Use this feature to specify rules for authorizing users to access websites and applications.

Mode	Users	Roles	Verbs	Entry Type
Deny	All Users			Inherited

5. Click on **Add Allow Rule...** under *Actions*.
6. Select **All users** and click **OK**. You will now see the new rule that is allowing all users.


.NET Authorization Rules


Use this feature to specify rules for authorizing users to access websites and applications.

Mode	Users	Roles	Verbs	Entry Type
Allow	All Users			Local
Deny	All Users			Inherited

7. Return to the SSRPM Web Interface, and refresh the page. Click on **Enroll** again, and you will be presented with the correct Enrollment Wizard.

Enroll

 **TOOLS4EVER**
IDENTITY GOVERNANCE & ADMINISTRATION

 Enter your username and password to continue. ?

Username:

Password:

Domain:

[Back](#) [Next](#)