



## SSRPM - Modifying Web Interface Text

James Anderson - 2017-05-12 - SSRPM

### Language File Modifications

The Language files still exist in the modern ASPX site with similar functionality they possessed in the old ASP site. These allow some basic adjustments to how menu options and phrases appear on the website.

Take a look at the main root page source code (adjust the path to match your local folders):

C:\inetpub\wwwroot\SSRPM\Views\Home\Index.cshtml

Look at the section that controls the text used for the Change Password link.

```
21 </div>
22 }
23 else if (String.Compare(button, "Reset", true) == 0)
24 {
25     <div class="icon-container" onclick="ShowAsWizard('@Url.Action("Identify", "Reset")', '@Localization.GetText("WIZARD_TITLE_RESET")
26     <i class="reset-icon icon"></i>
27     <label class="ssrpm-label">@Localization.GetText("HOME_RESET_TEXT")</label>
28 </div>
29 }
30 else if (String.Compare(button, "ChangePassword", true) == 0)
31 {
32     <div class="icon-container" onclick="ShowAsWizard('@Url.Action("Logon", "ChangePassword")', '@Localization.GetText("WIZARD_TITLE_
33     <i class="change-icon icon"></i>
34     <label class="ssrpm-label">@Localization.GetText("HOME_CHANGEPASSWORD_TEXT")</label>
35 </div>
36 }
37 else if (String.Compare(button, "AdSelfService", true) == 0)
38 {
39     <#if @Title.IsTrue(Url==Data["EnableAdSelfService@adurh"])>
```

The @Localization.GetText is pulling the data from the language file located (assuming US English is the default language used):

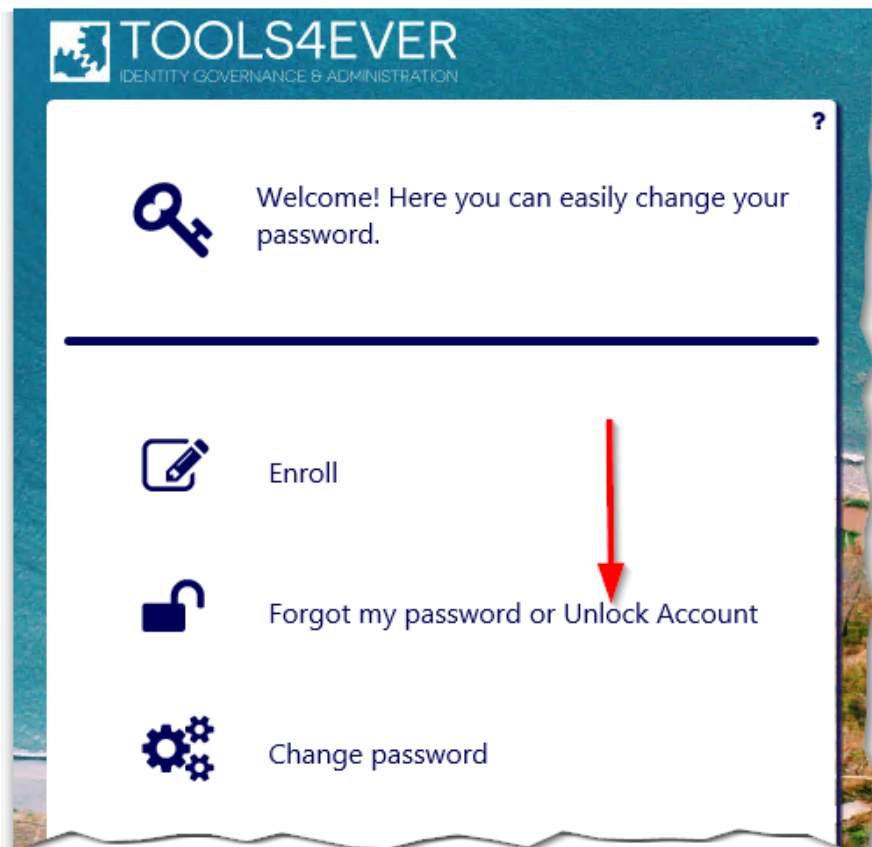
C:\inetpub\wwwroot\SSRPM\App\_Data\Languages\Language\_en-US.txt

When we modify the Language File, we can change what is displayed in that section of the page.

```
17
18 HOME_FORM_HEADER = Welcome! Here you can easily change your password.
19 HOME_ENROLL_TEXT = Enroll
20 HOME_RESET_TEXT = Forgot my password or Unlock Account
21 HOME_CHANGEPASSWORD_TEXT = Change password
22 HOME_ADSELSERVICE_TEXT = Manage your information in Active Directory
23
24 LOGON_FORM_HEADER = Enter your username and password to continue.
25 LOGON_ENTER_USERNAME_LABEL = Username:
```

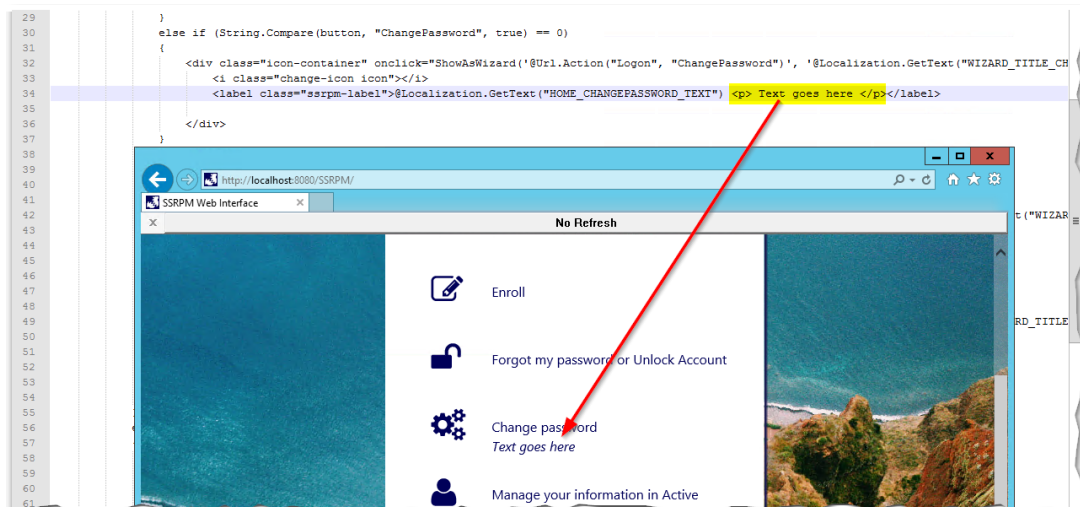
After making the change to the language file, do an IISReset (required when

changing the language file), and when you load the SSRPM site you should see your new text:



### csHTML File Modifications

You can make further modifications directly to the csHTML file as needed using normal HTML. Here is an example of adding some text to the main page, useful if further instructions or description is required for a particular function.



## Wrapping Up

It is strongly advised you keep good notes on anything you change (and a backup of your customized site), since you will need to apply the same changes when you update your SSRPM Service and web site in the future.

If you used the Web Site Installer (available with the latest version of SSRPM), or followed the instructions in the Web Interface Guide to deploy the SSRPM Web Interface, you should have two different SSRPM sites that you will need to apply your customizations to, one configured to use Windows Auth and the other using Forms Auth.

Hopefully this is enough to get you going! If you have anything specific you are trying to do, we are happy to try and help. Please reach out to us at:

**Email: [support@nwtools4ever.com](mailto:support@nwtools4ever.com)**

**Phone: (888) 770-4242**

Good luck and have fun customizing your SSRPM site!

### Related Content

- [Specify a default domain and hide domain selection](#)